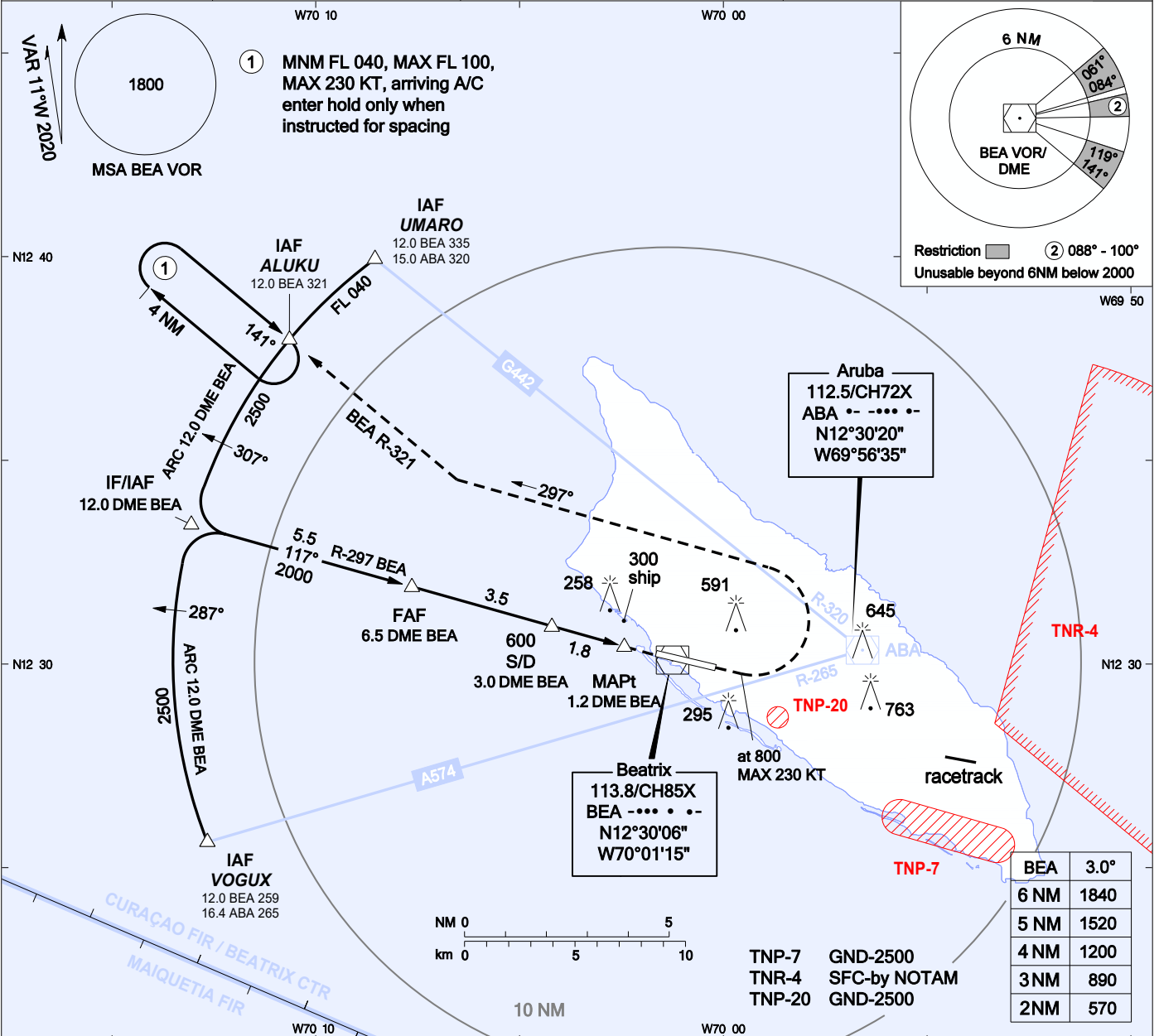
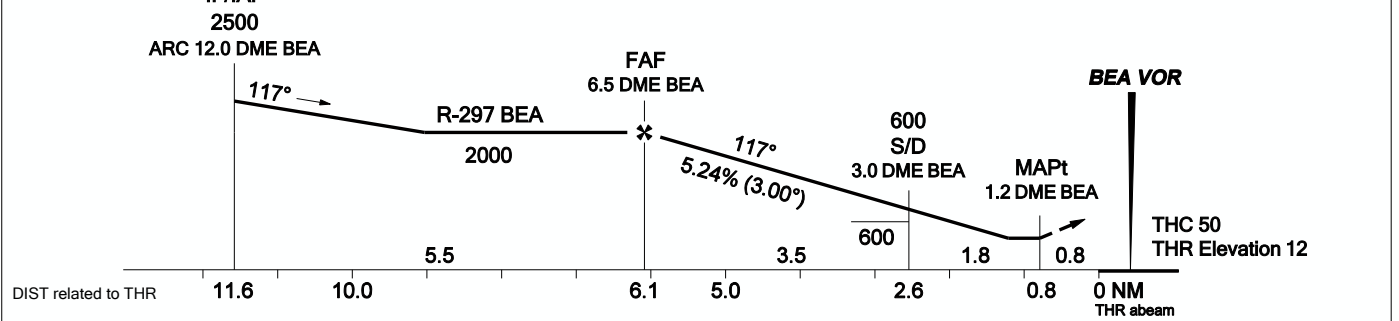


AIP DUTCH CARIBBEAN

INSTRUMENT APPROACH CHART - ICAO	AD ELEVATION: 62	BEATRIX:	VOR RWY 11
	TRANS LEVEL: FL 040	APP 120.9 TWR 118.0	REINA BEATRIX INT'L (TNCA)
	TRANS ALT: 2500 (2438)	APRON 121.6 ATIS 132.1	ARUBA



MISSED APPROACH: Climb on RWY course to 800 ft AMSL, climbing left turn to FL 040 on course 297° to join R-321 BEA to ALUKU and hold, or as directed by ATC. MAX 230 KT through first turn.



OCA(H)	A	B	C	D	GROUND SPEED - DESCENT RATE						
					KT	70	90	100	120	140	160
STRAIGHT-IN	550 (538)	550 (538)	550 (538)	550 (538)	ft/min	372	478	531	637	743	849
CIRCLING	890 (828)	890 (828)	1160 (1098)	1160 (1098)							

- DME required.
 - Straight-in heights are relative to THR elevation, other heights are relative to AD elevation.
 - Altitudes, elevations and heights in feet, distances in nautical miles, bearings are magnetic.
- THR 11 N12 30 15.50 W070 01 38.98
 MAPt 1.2 DME BEA N12 30 25.75 W070 02 25.55
 S/D 3.0 DME BEA N12 30 55.64 W070 04 11.68
 FAF 6.5 DME BEA N12 31 53.88 W070 07 38.63
 IF/IAF 12.0 DME BEA N12 33 24.91 W070 13 02.48
 ALUKU N12 37 54.84 W070 10 35.21
 UMARO N12 39 51.07 W070 08 27.25
 VOGUX N12 25 38.26 W070 12 38.46

CHANGES: Editorial. MAGVAR2020.